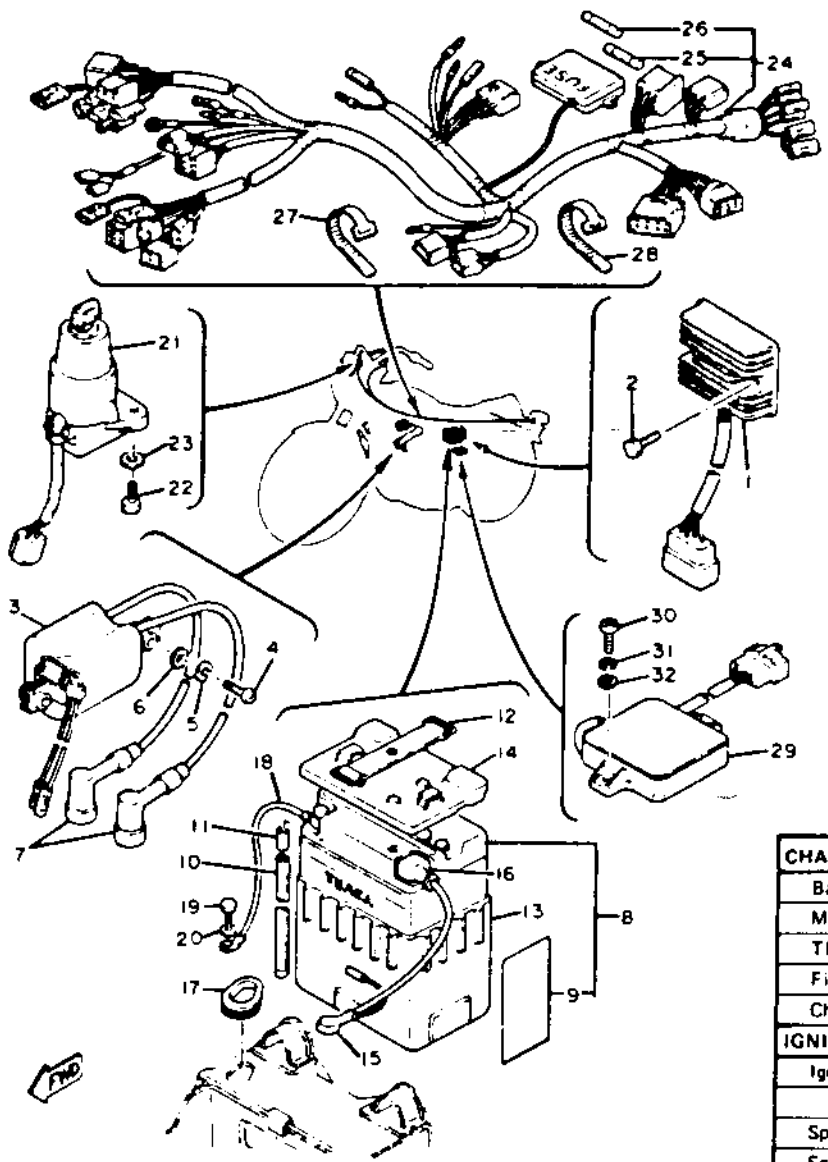


- 1 3G1-81960-50-00 RECTIFIER & REGULATOR ASS'Y 1
- 2 90109-06558-00 BOLT..... 2
- 3 3G1-82310-60-00 IGNITION COIL ASS'Y..... 1
- 4 92501-06030-00 SCREW, pan head..... 2
- 5 92903-06100-00 WASHER, spring (92901-06100) 2
- 6 92901-06600-00 WASHER, plate..... 2
- 7 256-82370-00-00 PLUG CAP ASS'Y..... 2
- 512-82370-10-00 PLUG CAP ASS'Y..... 2
- 8 447-82110-79-00 BATTERY ASS'Y (YB14L-A2)
(447-82110-83)..... 1
- * 9 LIT-82141-09-00 LABEL, battery (118-82141-09) 1
- 10 90445-08048-00 HOSE..... 1
- 11 90386-07043-00 BUSH..... 1
- 12 120-82131-00-00 BAND, battery..... 1
- 13 3G1-82122-00-00 SEAT, battery..... 1
- 14 2M0-82129-00-00 COVER, battery..... 1
- 15 447-82115-01-00 WIRE, plus lead..... 1
- 16 447-82119-00-00 COVER, lead wire..... 1
- 17 447-82128-00-00 GROMMET..... 1
- 18 447-82116-00-00 WIRE, minus lead..... 1
- 19 97301-06012-00 BOLT..... 1
- 20 92903-06100-00 WASHER, spring (92901-06100) 1

*Indicates new part numbers activated from March, 1981.

CHARGING SYSTEM	A.C. Generator / 3 Phase / Full Wave
Battery: Model / Spcc. Grav. / Chg. Rate	Yuasa YB14L-A2 (12V14AH) / 1.28 / 1.4
Maximum Output	14V 16A @ 5000 rpm
TROUBLESHOOTING	
Field Coil Color Code / Ω	Rotor: Grn-Brn/5.3 Ω \pm 10% Stator: Wh



- 21 2G2-82508-50-00 MAIN SWITCH ASS'Y 1
- 22 97301-06018-00 BOLT (97301-06015) 2
- 23 92901-06600-00 WASHER (92902-06600)..... 2
- 24 3G0-82590-50-00 WIRE HARNESS ASS'Y..... 1
- 25 1A0-82151-00-00 . FUSE (12V-10A)..... 3
- 26 1A0-82161-00-00 . FUSE (12V-20A)..... 1
- 27 447-82591-00-00 BAND 4
- 28 435-13474-00-00 BAND 1
- 29 4M4-82305-10-00 IGNITOR UNIT ASS'Y
(3G1-82305-10)..... 1
- 30 92501-06025-00 SCREW, pan head..... 2
- 31 92903-06100-00 WASHER, spring (92901-06100) - 2
- 32 90201-06067-00 WASHER, plate 2

CHARGING SYSTEM	A.C. Generator / 3 Phase / Full Wave
Battery: Model / Spec. Grav. / Chg. Rate	Yuasa YB14L-A2 (12V14AH) / 1.28 / 1.4A
Maximum Output	14V 16A @ 5000 rpm
TROUBLESHOOTING	
Field Coil Color Code / Ω	Rotor: Grn ~ Brn / 5.3 Ω \pm 10% Stator: Whr ~ Whr
Charge Coil Color Code / Ω	ϕ
IGNITION SYSTEM	Transistor Controlled Ignition
Ignition Timing	15° Mark
	Std: 15° @ 1200 rpm Adv: 40° @ Approx
Spark Plug Type	NGK BP7ES or Champion N7Y
Spark Plug Gap / Torque / Cap Ω	0.7 ~ 0.8mm / 2.0 m.kg / 10K Ω
Point Gap / Condenser Capacitance	ϕ / ϕ
TROUBLESHOOTING	
Ignition Coil Test Gap / Primary Ω / Secondary Ω	6.0mm / 2.5 Ω \pm 10% / 13K Ω \pm 20%
Pulse Coil or Pick-up Coil Color Code / Ω	Org ~ Blk, Gry ~ Blk / 700 Ω \pm 20%