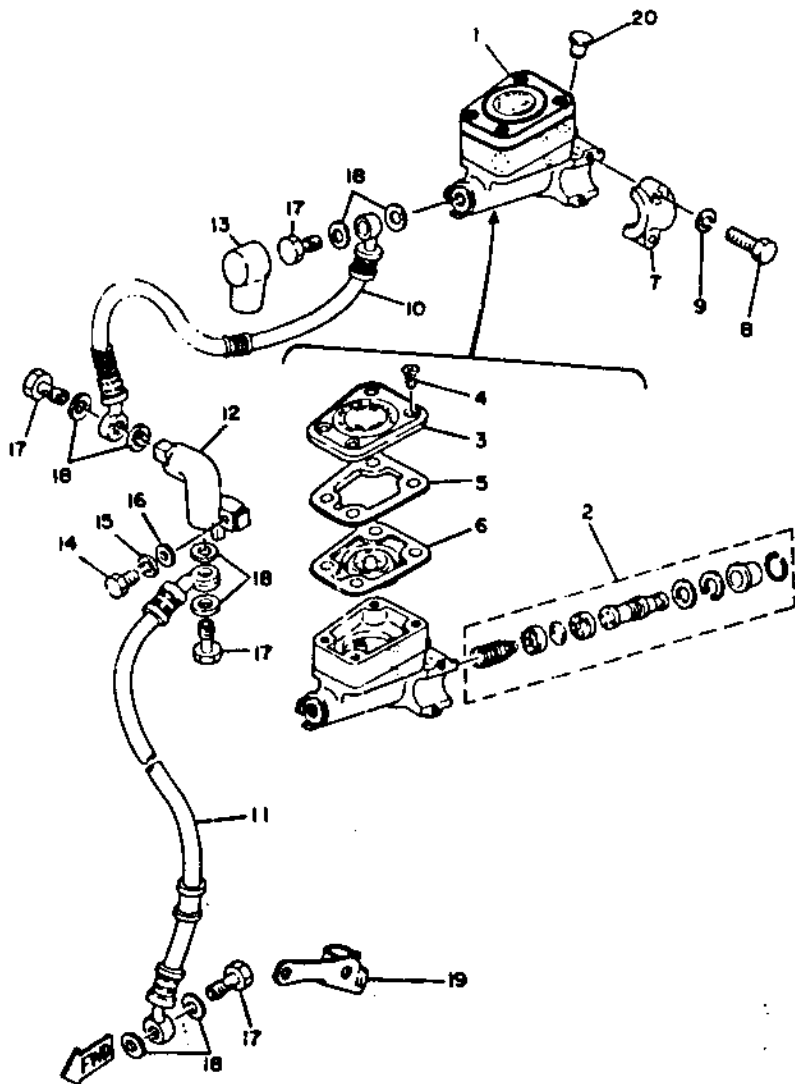
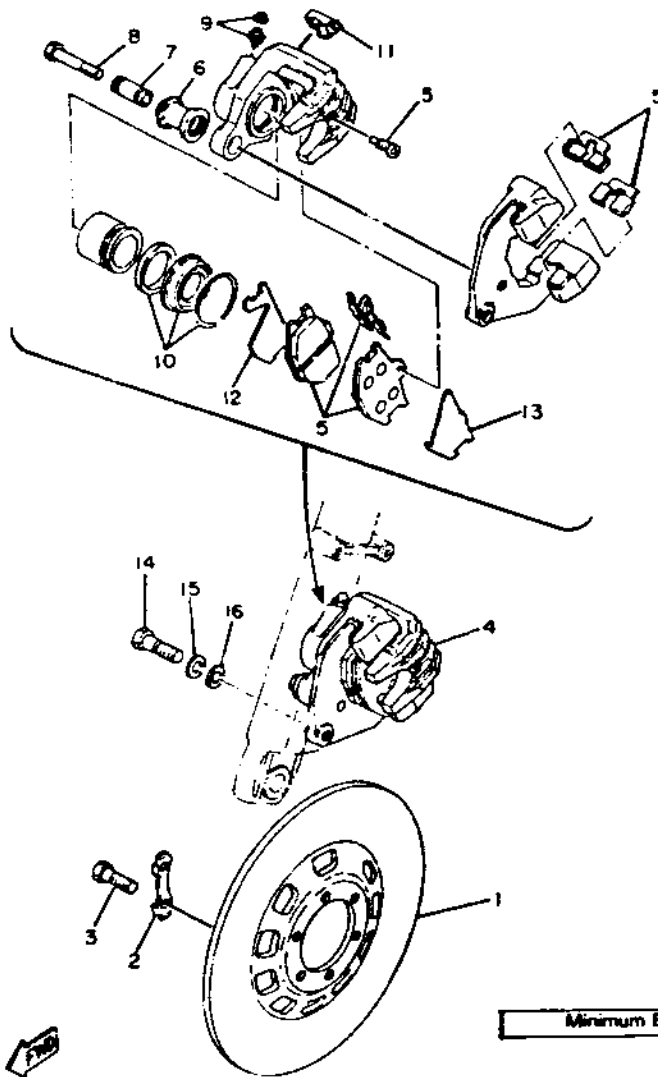


# FRONT MASTER CYLINDER



| Ref. No. | Part Number     | Description                   | Qty. |
|----------|-----------------|-------------------------------|------|
| 1        | 3G1-25850-00-00 | MASTER CYLINDER ASS'Y.....    | 1    |
| 2        | 535-W0041-60-00 | . CYLINDER KIT, master.....   | 1    |
| 3        | 1J3-25852-01-00 | CAP, reservoir.....           | 1    |
| 4        | 98706-05030-00  | . SCREW, flat head.....       | 4    |
| 5        | 1J3-25855-01-00 | . BUSH, diaphragm.....        | 1    |
| 6        | 1J3-25854-01-00 | . DIAPHRAGM, reservoir.....   | 1    |
| 7        | 1J3-25867-00-00 | BRACKET, master cylinder..... | 1    |
| 8        | 97326-06025-00  | BOLT.....                     | 2    |
| 9        | 92906-06100-00  | WASHER, spring.....           | 2    |
| 10       | 2M0-25872-00-00 | HOSE, brake 1.....            | 1    |
| 11       | 1T3-25873-00-00 | HOSE, brake 2.....            | 1    |
| 12       | 1J7-25885-01-00 | JOINT.....                    | 1    |
| 13       | 306-25862-00-00 | BOOT, master cylinder.....    | 1    |
| 14       | 97301-06025-00  | BOLT.....                     | 1    |
| 15       | 92903-06100-00  | WASHER, spring (92901-06100)  | 1    |
| 16       | 92901-06600-00  | WASHER, plate.....            | 1    |
| 17       | 90401-10034-00  | BOLT, union.....              | 4    |
| 18       | 90201-10118-00  | WASHER, plate.....            | 8    |
| 19       | 1J3-25875-02-00 | HOLDER, brake hose 1.....     | 1    |
| 20       | 90338-09012-00  | PLUG.....                     | 1    |

# FRONT BRAKE - CALIPER



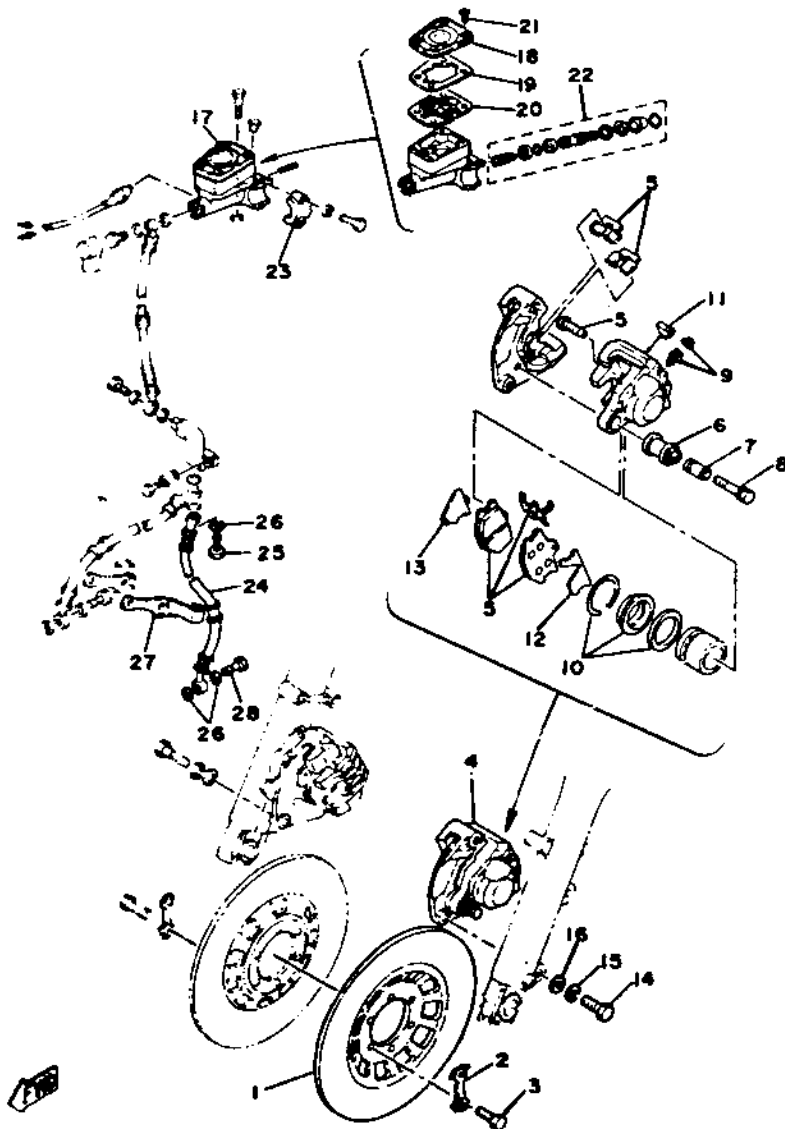
| Ref. No. | Part Number     | Description                  | Qty. |
|----------|-----------------|------------------------------|------|
| 1        | 1J3-25831-00-00 | DISC, brake .....            | 1    |
| 2        | 3H5-25834-00-00 | WASHER, lock. ....           | 3    |
| 3        | 90101-08477-00  | BOLT. ....                   | 6    |
| 4        | 3H5-25810-02-00 | CALIPER ASS'Y (right) .....  | 1    |
| 5        | 3HE-W0045-01-00 | . BRAKE PAD KIT, front. .... | 1    |
| 6        | 1J3-25917-00-00 | . BOOT, caliper .....        | 1    |
| 7        | 1J3-25838-00-00 | . SLEEVE, caliper .....      | 1    |
| 8        | 90105-08145-00  | . BOLT, washer based .....   | 1    |
| 9        | 1J3-W0048-00-00 | . BREED SCREW KIT. ....      | 1    |
| 10       | 1J3-W0047-00-00 | . CALIPER SEAL KIT .....     | 1    |
| 11       | 1J3-25845-01-00 | . CAP, indicator. ....       | 1    |
| 12       | 3H5-25827-00-00 | . SHIM, caliper .....        | 1    |
| 13       | 3H5-25828-00-00 | . SHIM, caliper .....        | 1    |
| 14       | 90101-10308-00  | BOLT. ....                   | 2    |
| 15       | 92903-10100-00  | WASHER, spring (92901-10100) | 2    |
| 16       | 92903-10200-00  | WASHER, plain (92901-10200)  | 2    |

Minimum Brake Lining Thickness

Front: 3.0mm

Rear: 6.0mm

# DOUBLE DISC BRAKE, OPTIONAL PARTS



| Ref. No. | Part Number     | Description                   | Qty. |
|----------|-----------------|-------------------------------|------|
| 1        | 1J3-25831-00-00 | DISC, brake .....             | 1    |
| 2        | 3H5-25834-00-00 | WASHER, lock.....             | 3    |
| 3        | 90101-08477-00  | BOLT.....                     | 6    |
| 4        | 3H5-25810-12-00 | CALIPER ASS'Y (left) .....    | 1    |
| 5        | 3H5-W0045-01-00 | . BRAKE PAD KIT, front.....   | 1    |
| 6        | 1J3-25917-00-00 | . BOOT, caliper .....         | 1    |
| 7        | 1J3-25838-00-00 | . SLEEVE, caliper .....       | 1    |
| 8        | 90105-08145-00  | . BOLT, washer based .....    | 1    |
| 9        | 1J3-W0048-00-00 | . BREED SCREW KIT.....        | 1    |
| 10       | 1J3-W0047-00-00 | . CALIPER SEAL KIT .....      | 1    |
| 11       | 1J3-25845-01-00 | . CAP, indicator.....         | 1    |
| 12       | 3H5-25827-00-00 | . SHIM, caliper .....         | 1    |
| 13       | 3H5-25828-10-00 | . SHIM, caliper .....         | 1    |
| 14       | 90101-10308-00  | BOLT.....                     | 2    |
| 15       | 92903-10100-00  | WASHER, spring (92901-10100)  | 2    |
| 16       | 92903-10200-00  | WASHER, plain (92901-10200)   | 2    |
| 17       | 3J6-25850-00-00 | MASTER CYLINDER ASS'Y.....    | 1    |
| 18       | 1J3-25852-01-00 | . CAP, reservoir.....         | 1    |
| 19       | 1J3-25855-01-00 | . BUSH, diaphragm.....        | 1    |
| 20       | 1J3-25854-01-00 | . DIAPHRAGM, reservoir.....   | 1    |
| 21       | 98706-05040-00  | . SCREW, flat head.....       | 4    |
| 22       | 1J3-W0041-20-00 | . CYLINDER KIT, master.....   | 1    |
| 23       | 1J3-25867-00-00 | BRACKET, master cylinder..... | 1    |
| 24       | 1T3-25873-00-00 | HOSE, brake 2.....            | 1    |
| 25       | 90401-10044-00  | BOLT, union.....              | 1    |
| 26       | 90201-10118-00  | WASHER, plate.....            | 3    |
| 27       | 1J3-25876-02-00 | HOLDER, brake hose 2.....     | 1    |
| 28       | 90401-10034-00  | BOLT, union.....              | 1    |