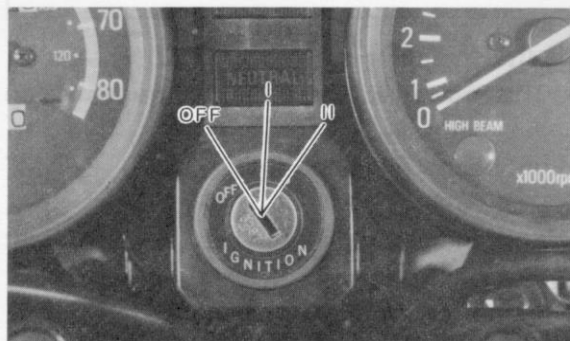


CONTROL FUNCTIONS

Main switch

The following chart shows the key position at which the lights, horn and ignition circuit are switched on or off. (The circle (○) denotes "Switch on".)

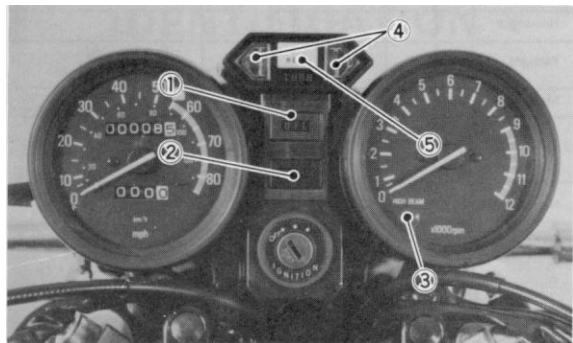


Part name	Key position			Instructions
	●OFF	I	●II	
Headlight		○●●		—
Taillight		○	○	Use II for night parking
Meter lights		○		—
Ignition circuit		○		Push the starter button to start the engine
Neutral light		○		The change pedal is in neutral
Brake light		○		The brake is applied
Flasher lights		○		Turn on the left handlebar switch
Horn		○		Press the horn button

● The key can be removed in this position

●● The light comes on when the engine is started.

Indicator lights



- 1 Oil pressure indicator light
- 2 Neutral indicator light
- 3 High beam indicator light
- 4 Turn indicator light
- 5 Headlight failure indicator light

Oil pressure indicator light “OIL” (red):

When oil pressure rises to operating pressure the oil pressure indicator goes off, indicating the proper operation of the lubrication system.

,WARNING:

If the indicator light comes on, stop the engine immediately. Do not operate the motorcycle until the exact problem has been taken care of. See your Yamaha dealer or other qualified mechanic. This light indicates an unsafe condition.

Neutral indicator light “NEUTRAL” (green):

This indicator lights when the transmission is in neutral.

High beam indicator light “HIGH BEAM” (blue):

This indicator lights when the headlight high beam is used.

Turn indicator light “TURN” (orange):

This indicator flashes when the turn switch is “ON”

Headlight failure indicator light “HEAD” (white):

If either headlight filament burns out, the other filament will come on and the indicator will come on.

- WARNING: -

If the headlight failure indicator light comes on, be sure to replace the headlight bulb as soon as possible to avoid having no headlight at all if the other filament fails.

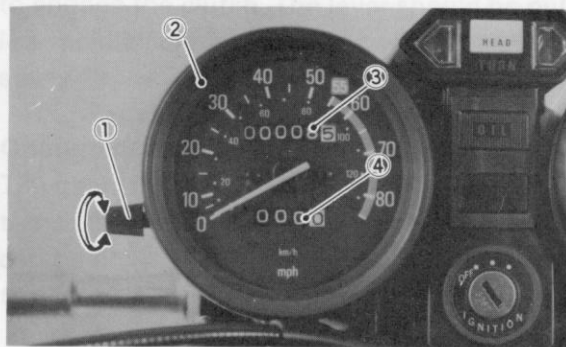
NOTE: -

If you are planning on a long trip, it may be a good idea to carry spare headlight bulbs.

Speedometer

The odometer and trip odometer are built into the speedometer. The trip odometer can be reset to "0" with the reset knob.

Use the odometer to estimate how far you can ride on a tank of fuel before going to "RESERVE". This information will enable you to plan fuel stops in the future.

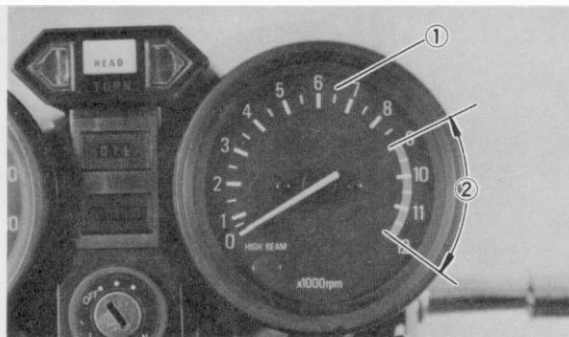


- | | |
|----------------|------------------|
| 1. Reset knob | 3. Odometer |
| 2. Speedometer | 4. Trip odometer |

Tachometer

The tachometer is provided so the rider can keep engine revolutions within the ideal power range.

Do not operate in the red zone.
Red zone: 9,000 r/min and above

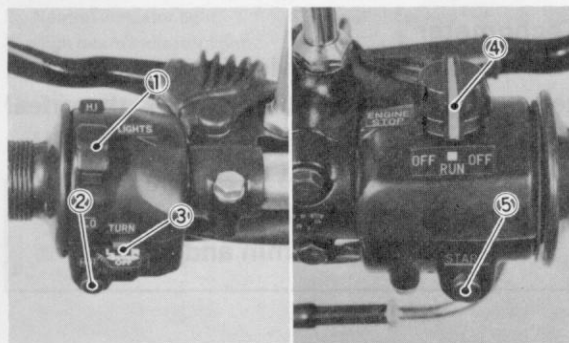


1 Tachometer

2 Red Zone

3. Fuel gauge

Handlebar switches:



1. "LIGHTS" (Dimmer) switch

2. "HORN" switch

3. "TURN" switch

4. "ENGINE STOP" switch

5. "START" switch

"LIGHTS" (Dimmer) switch

Turn to the "HI" position for the high beam and to the "LO" position for the low beam.

"HORN" switch

Press the button to sound the horn.

"TURN" switch

This model is equipped with a turn indicator system that is self-cancelling. To signal a right-hand turn, push the switch to the right. To signal a left-hand turn, push the switch to the left. Once the switch is released it will return to the center position. To cancel the signal push the switch "in" after it has returned to the center position. If the switch is not cancelled by hand it will self-cancel after the motorcycle has travelled about 10 seconds or approximately 150 meters (490 feet) whichever is greater.

“ENGINE STOP”switch

Make sure that the engine stop switch is on “RUN”. The engine stop switch has been equipped to ensure safety in an emergency such as when the motorcycle is upset or trouble takes place in the throttle. The engine will not start when the engine stop switch is turned to “OFF”. In case of an emergency, turn the switch to “OFF”.

“START” switch

To start the engine, push the starter button.

CAUTION:

See starting instructions prior to starting engine.

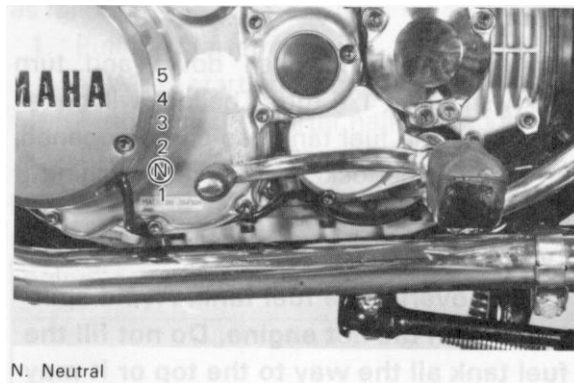
Clutch lever

The clutch lever is located on the left handlebar and disengages or engages the clutch. Pull the clutch lever to the handlebar to disengage the clutch and release the lever

to engage the clutch. The lever should be pulled rapidly and released slowly for smooth starts.

Change pedal

The gear ratios of the constant mesh 5 speed transmission are ideally spaced. The gears can be shifted by using the change pedal on the left side of the engine.



Front brake lever

The front brake lever is located on the right handlebar. Pull it toward the handlebar to activate the front brake.

Rear brake pedal

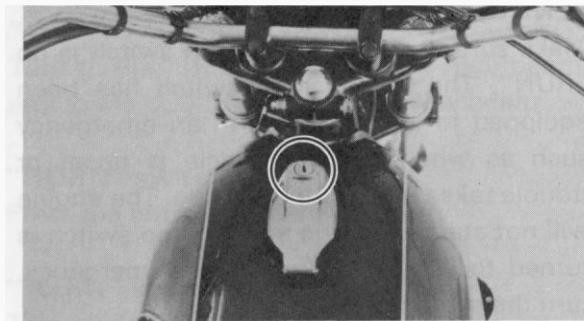
The rear brake pedal is on the right side of the motorcycle. Press down on the brake pedal to activate the rear brake.

Fuel tank cap

Insert the key and push down and turn clockwise about 1/4 turn. The lock will be released and the fuel tank cap can be opened. The cap can be locked by merely pushing it into position.

-WARNING:

Do not overfill the fuel tank. Avoid spilling fuel on the hot engine. Do not fill the fuel tank all the way to the top or it may overflow when the fuel heats up later and expands.



Fuel petcock

The negative pressure fuel petcock(s) supplies fuel from the tank to the carburetor(s) and also filters the fuel. The fuel petcock(s) has the following three positions:

