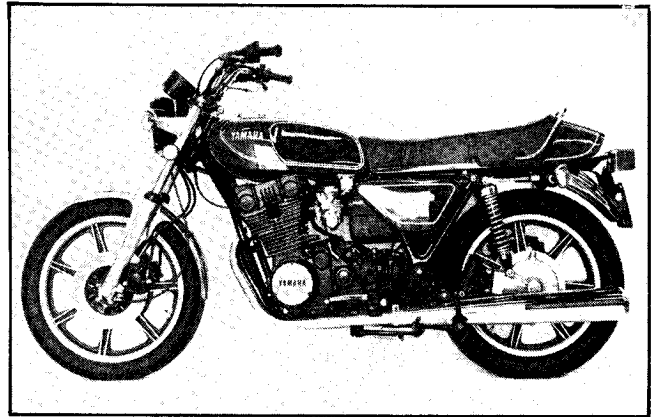
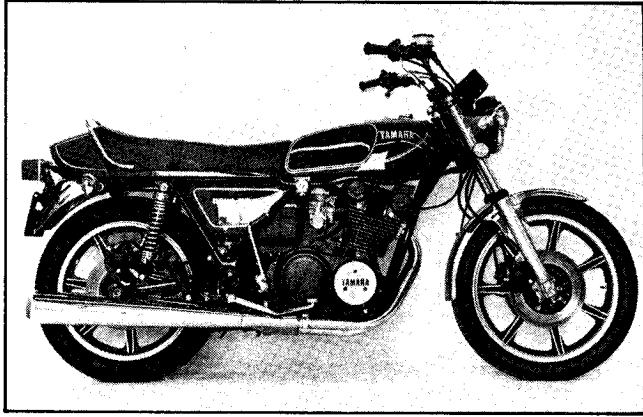


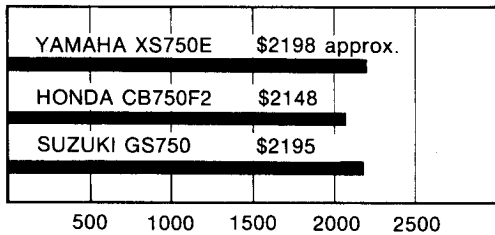
YAMAHA XS750E



TEST BIKE: YAMAHA XS750E

Price, sugg. retail.....\$2198 approx.

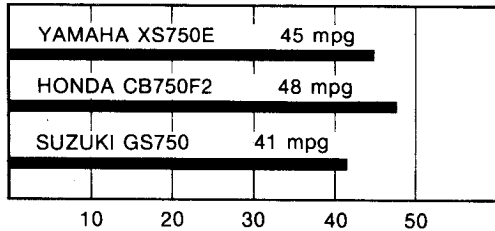
PRICE



ENGINE

Type.....DOHC transverse triple
 Bore/stroke.....68 x 68.6mm (2.68 x 2.70 in.)
 Piston displacement.....747 cc (45.6 cu. in.)
 Compression ratio.....9.5:1
 Carburetion.....(3) Mikuni BS34-II constant velocity
 Air filtration.....Dry foam
 Ignition.....Magnetically-triggered transistorized
 BHP @ rpm.....n.a.
 Torque @ rpm.....n.a.
 Lubrication.....Wet sump, trochoid pump
 Electrical power.....210-watt alternator
 Battery.....12V, 14AH

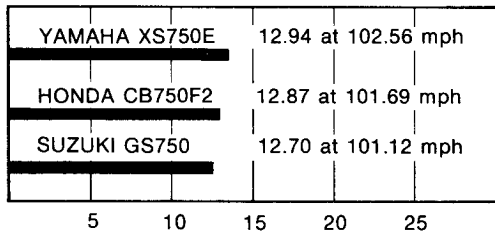
AVERAGE FUEL ECONOMY



DRIVETRAIN

Primary transmission.....Hy-Vo chain, 1.66 ratio
 Clutch.....Multi-plate, wet
 Secondary transmission.....Shaft and bevel gear
 Gear ratios, overall :1..1st 14.63; 2nd 9.48; 3rd 7.76; 4th 6.53; 5th 5.71

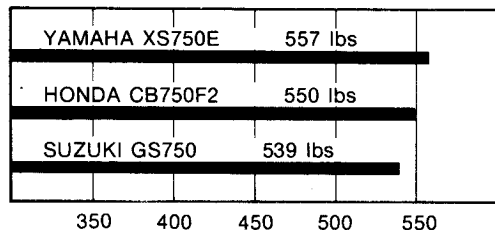
QUARTER-MILE



CHASSIS & SUSPENSION

Suspension, front.....Telescopic fork, 175 mm (6.9 in.) travel
 Suspension, rear.....Swing arm, 80 mm (3.15 in.) travel
 Tire, front.....3.25 H 19
 Tire, rear.....4.00 H 18
 Brake, front...Disc, 267 x 36.9 mm (10.51 x 1.45 in.) x 4
 Brake, rear....Disc, 265 x 36.9 mm (10.45 x 1.45 in.) x 2
 Brake swept area.....628.9 sq. cm. (247.6 sq. in.)
 Rake/trail.....26 30'/109mm (4.29 in.)
 Wheelbase.....57.8 in.
 Seat height.....823 mm (32.4 in.)
 Handlebar width.....787 mm (31.0 in.)
 Ground clearance.....147 mm (5.8 in.)
 Instruments.....Speedometer, trip reset, tachometer, oil pres., neutral, turn signal, headlight filament out.
 Stands.....Side and center
 Tire retention device(s).....None

WEIGHT



WEIGHTS & CAPACITIES

Fuel capacity.....17 lit. (4.5 gal.)
 Oil capacity.....3.8 lit. (4.0 qt.)
 Weight, wet, unladen.....252.6 kg. (557 lb.)

PERFORMANCE

Standing start quarter-mile.....12.94 sec./102.56
 Average fuel consumption.....45 mpg