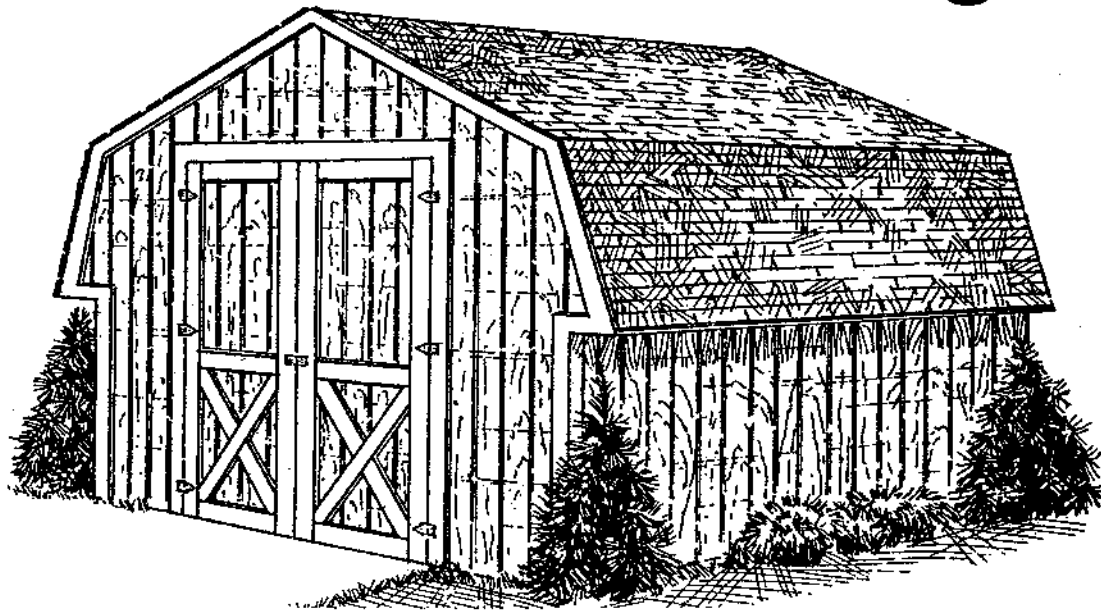


12' Deluxe Barns

3 Piece Truss Design



MINIBARN ASSEMBLY AND INSTALLATION INSTRUCTIONS

1. Cut and square pressure treated 4x4 skids to 11'9". See illustration A-A.
2. Cut and square pressure treated 2x4 ribbon boards to 12'-0" or 16'-0". See illustration A-A.
3. Nail ribbon boards & skids together. See illustration A-A.
4. Cut and nail in place 5/8" floor sheathing, using 8d nails, as shown on illustration B.
5. Cut and square single top and bottom plates to 12'-0" or 16'-0" and nail to wall trusses, using 16d sinkers. See illustration A and illustration F, Section 'B'.
6. Stand wall trusses on end and attach flush with outside edge of 5/8" flooring, using 16d sinkers. See illustration A.
7. Attach roof trusses to single top plates, using 16d sinkers. See illustration A and illustration F, Section 'B'.
8. Cut side wall sheathing and nail in place, using 8d siding nails. See illustration C for cutting details.
9. Cut, square and notch front and rear wall framing. See illustrations D and E for details.
10. Cut and install roof sheathing, using 8d nails. See illustration G for cutting details.
11. Cut and nail 7/16" soffit in place, using 8d nails. See illustrations A and F for location.
12. Cut front and rear wall sheathing and nail in place, using 8d siding nails. See illustrations H, I and J for cutting instructions.
13. Assemble the door panels. Screw through the back side of the door panel into the 1x4 door trim, using the screws provided. See illustration K for instructions.
14. Apply 1x4 trim to corners and rake, using 8d siding nails.
15. Apply 1x4 trim around door opening, using 8d siding nails.
16. Install roofing as per manufacturers instructions, using 1 1/4" roof nails.
17. Install door panels using the hinges, hasp, barrel bolts & screws provided.
18. Paint and/or stain barn as desired.

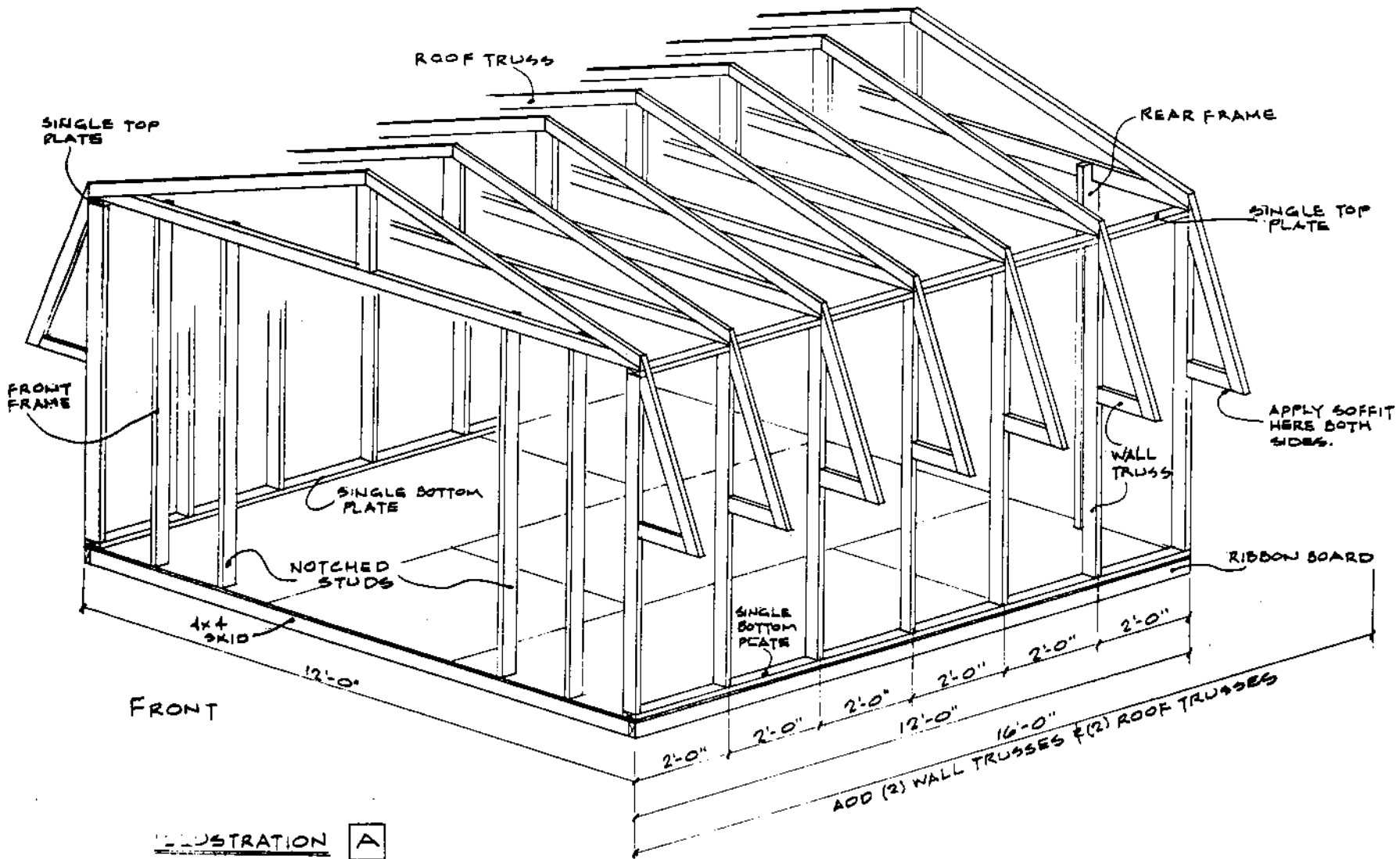
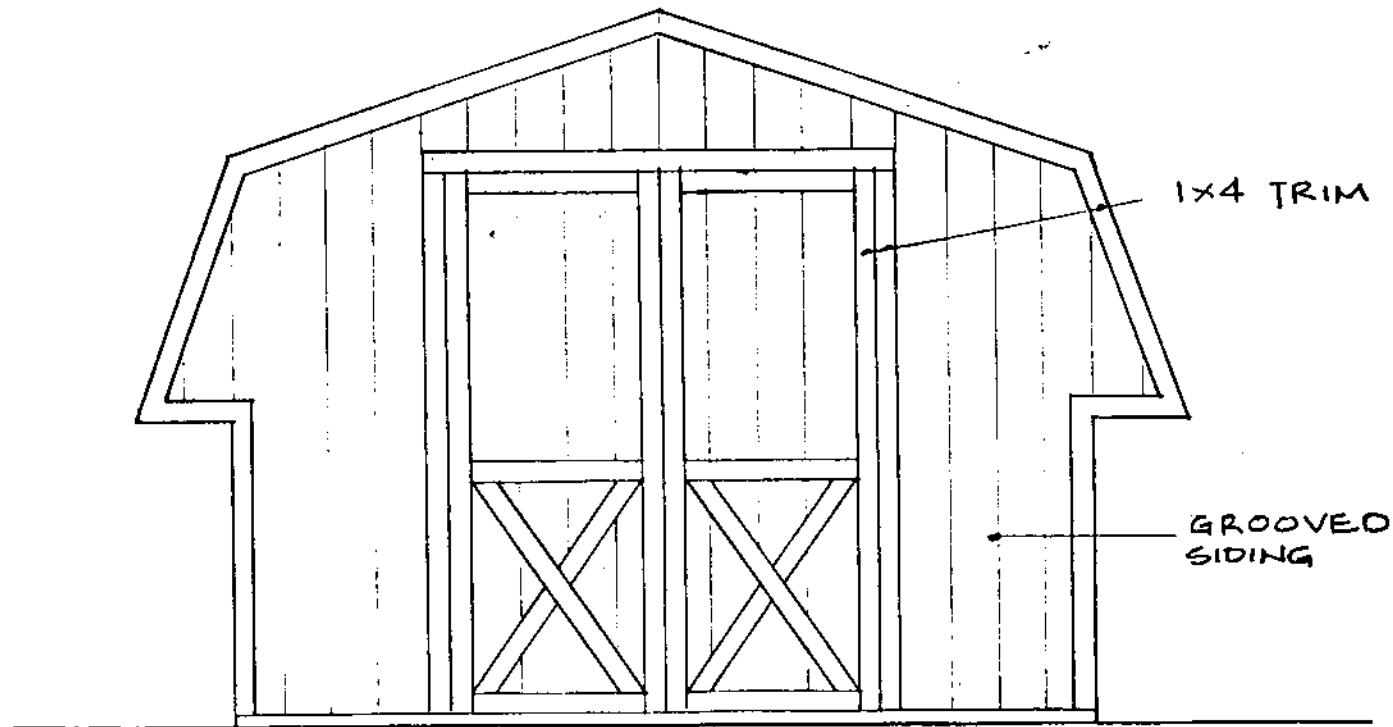
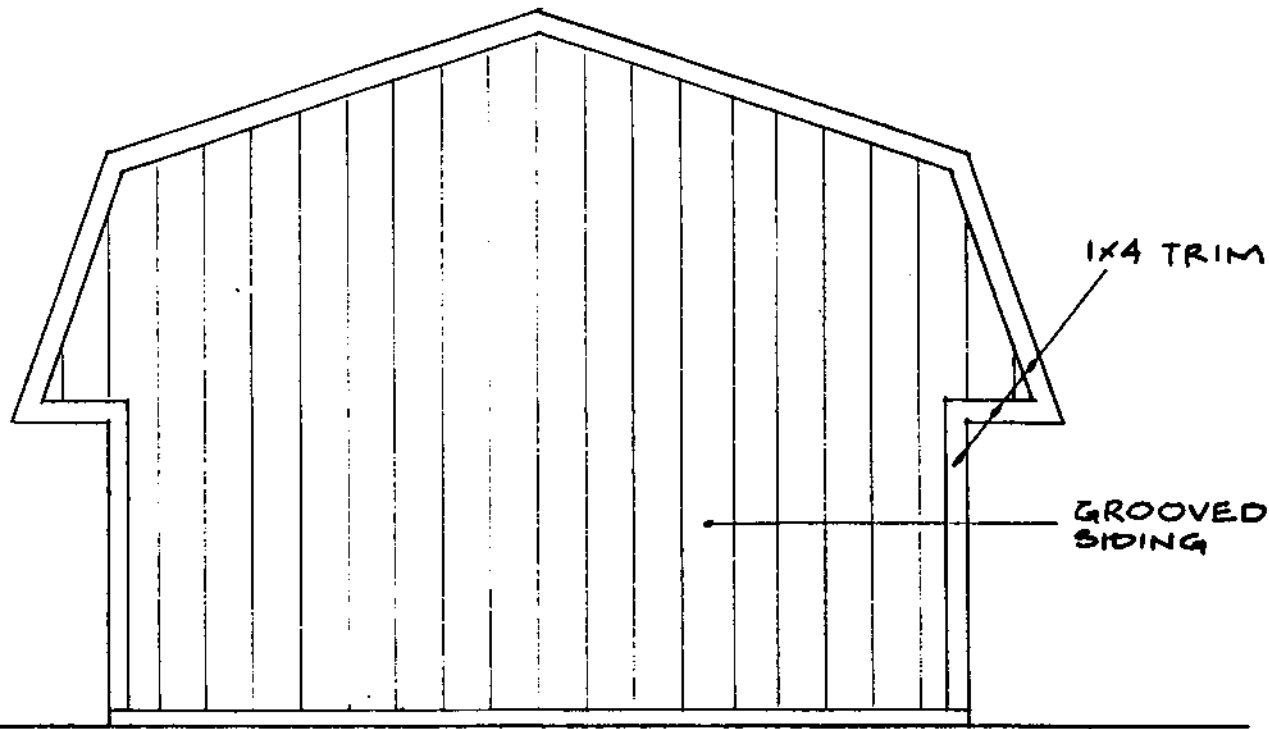


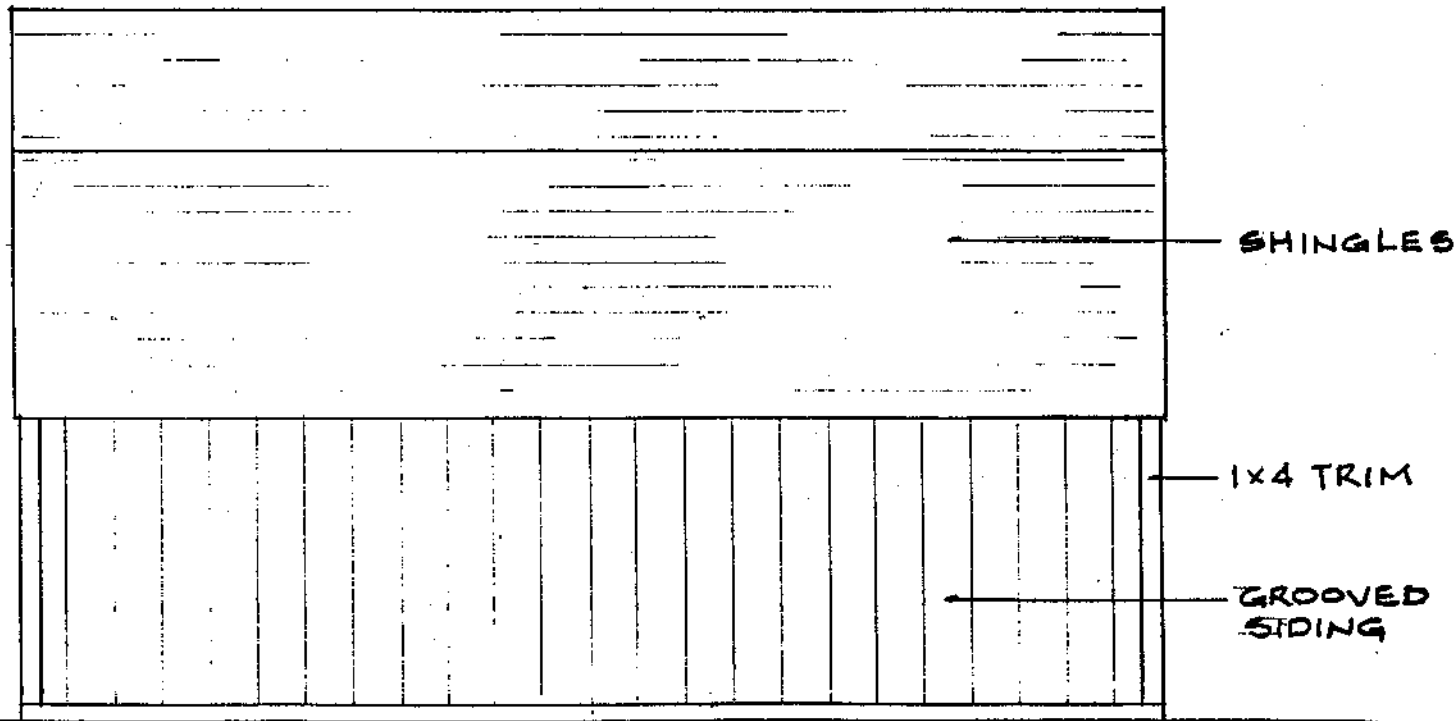
ILLUSTRATION A



FRONT ELEVATION



REAR ELEVATION



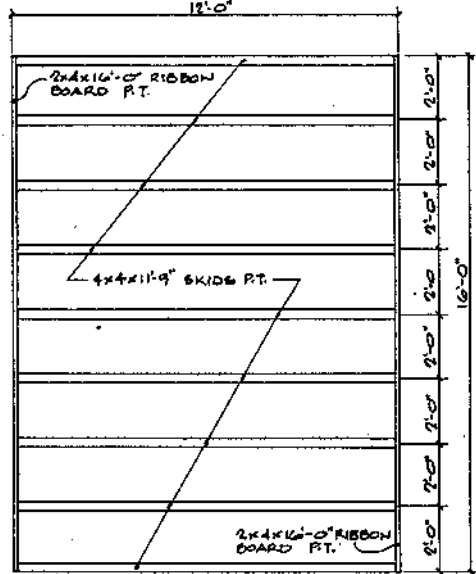
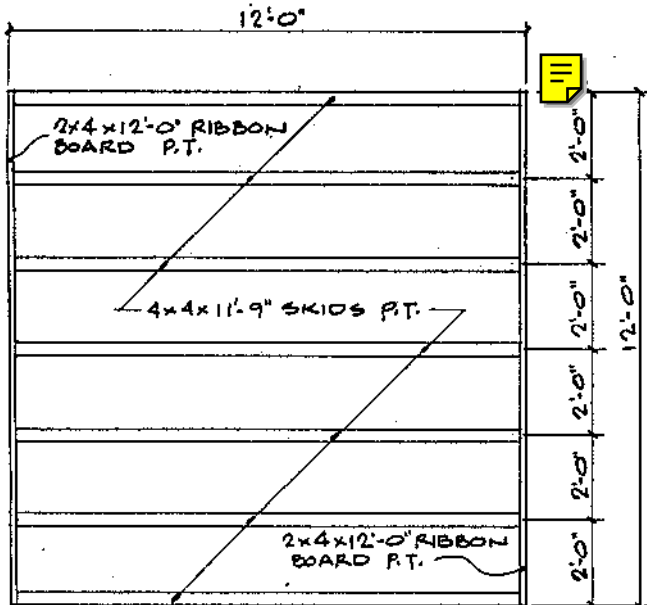
SIDE ELEVATION

MATERIAL LIST 12X12 DELUXE SHED POS# 837-11-99

QUANTITY	SIZE	DESCRIPTION
7	4X4-12'	TREATED SKIDS
2	2X4-12'	TREATED RIBBON
5	5/8"X4'X8'	FLOOR SHEATHING
7	PR.	WALL TRUSSES SPACED 24" ON CENTER
7	12'	TRUSSES; 4/12 PITCH, 24" ON CENTER - NO OVERHANG
4	2X4-12'	SINGLE BOTTOM AND TOP PLATE
9	2X4-8'	DOOR AND END FRAME ASSEMBLY
12	4'X8'	GROOVED SIDING
9	7/16"X4'X8'	ROOF & SOFFIT SHEATHING
3	SQ.	SHINGLES FOR ROOF
5	1X4-8'	OUTSIDE CORNER TRIM (SIDES), DOOR TRIM, X-BUCK
8	1X4-10'	OUTSIDE CORNER TRIM (FRONT/REAR), DOOR TRIM (UPRIGHT/HORIZONTAL MEMBERS)
4	1X4-12'	RAKE TRIM
NAILS		
3	LBS.	16D SINKERS - FRAMING
3	LBS.	8D SINKERS - FLOOR & ROOF SHEATHING
7	LBS.	8D GALVANIZED SIDING, TRIM AND SOFFIT NAILS
6	LBS.	ROOFING NAILS
1	LB.	DRYWALL SCREWS
HARDWARE PACKAGE		
3	PR.	5" T-HINGES
2	PCS.	BARREL BOLTS
1	3 1/4"	HASP
OPTIONAL & EXTRA		
3	10'	DRIP EDGE
1	ROLL	FELT PAPER
3	GALS.	PAINT OR STAIN - SIDING
1	GAL.	PAINT OR STAIN - TRIM
1	PC.	PAINT BRUSH
6	2X4-8'	INTERIOR DOOR SURROUND
1	10' OZ.	TUBE CAULKING/SIDING SEAM

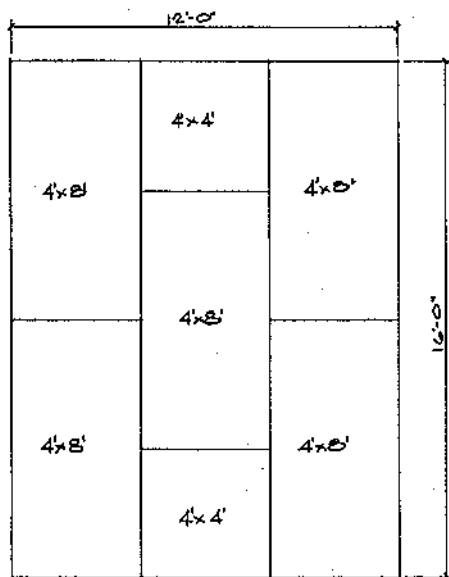
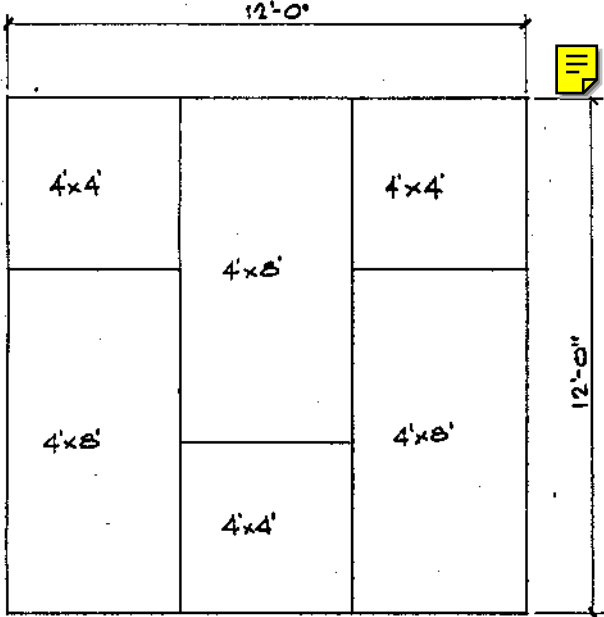
MATERIAL LIST 12X16 DELUXE SHED POS# 837-12-99

QUANTITY	SIZE	DESCRIPTION
9	4X4-12'	TREATED SKIDS
2	2X4-16'	TREATED RIBBON BOARDS
6	5/8"X4'X8'	FLOOR SHEATHING
9	PR.	WALL TRUSSES
9	12'	TRUSSES; 4/12 PITCH, 24" ON CENTER - NO OVERHANG
4	2X4-16'	SINGLE BOTTOM AND TOP PLATES - SIDES
9	2X4-8'	DOOR AND END FRAME ASSEMBLY
13	4'X8'	GROOVED SIDING
12	7/16"X4'X8'	ROOF & SOFFIT SHEATHING
4	SQ.	SHINGLES FOR ROOF
5	1X4-8'	OUTSIDE CORNER TRIM (SIDES), DOOR TRIM, X-BUCK
8	1X4-12'	OUTSIDE CORNER TRIM (FRONT/REAR), DOOR TRIM (UPRIGHT/HORIZONTAL MEMBERS)
NAILS		
4	LBS.	16D SINKERS - FRAMING
4	LBS.	8D SINKERS -
9	LBS.	8D GALVANIZED SIDING, TRIM AND SOFFIT NAILS
8	LBS.	ROOFING NAILS
1	LB.	DRYWALL SCREWS
HARDWARE PACKAGE		
3	PR.	5" T-HINGES
2	PCS.	BARREL BOLTS
1	3 1/4"	HASP
OPTIONAL & EXTRA		
4	10'	DRIP EDGE
1	ROLL	FELT PAPER
4	GALS.	PAINT OR STAIN - SIDING
1	GAL.	PAINT OR STAIN - TRIM
1	PC.	PAINT BRUSH
6	2X4-8'	INTERIOR DOOR SURROUND
1	10' OZ.	TUBE CAULKING/SIDING SEAM



FLOOR FRAMING LAYOUT

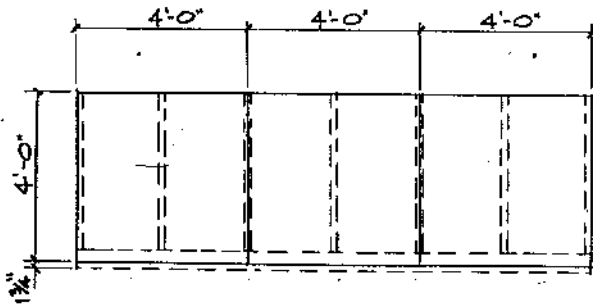
ILLUSTRATION A-A



FLOOR SHEATHING
LAYOUT

ILLUSTRATION

B

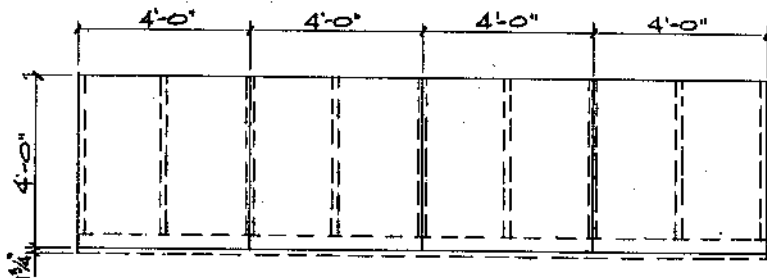


12' x 12'

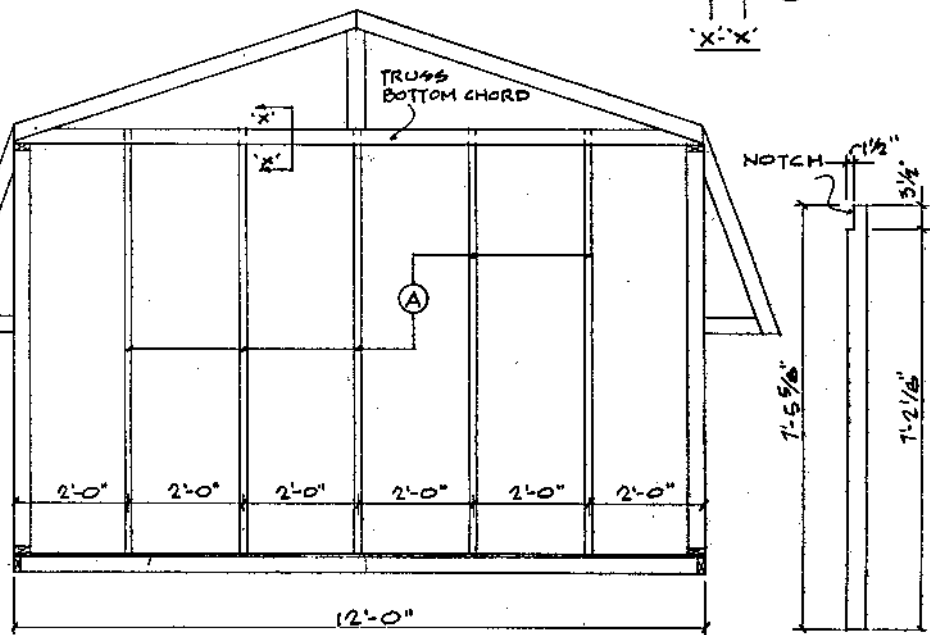
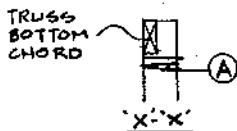
DOTTED LINES
INDICATE BARN
STRUCTURE

**SIDE WALL
SIDING LAYOUT**

C ILLUSTRATION



12' x 16'

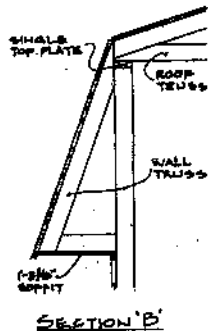
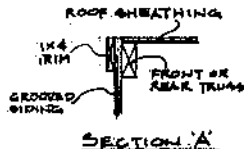
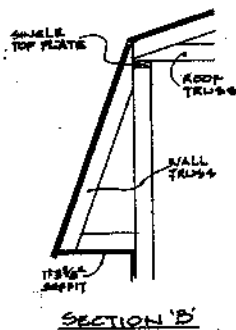
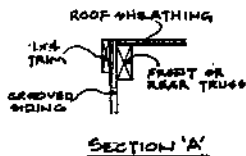
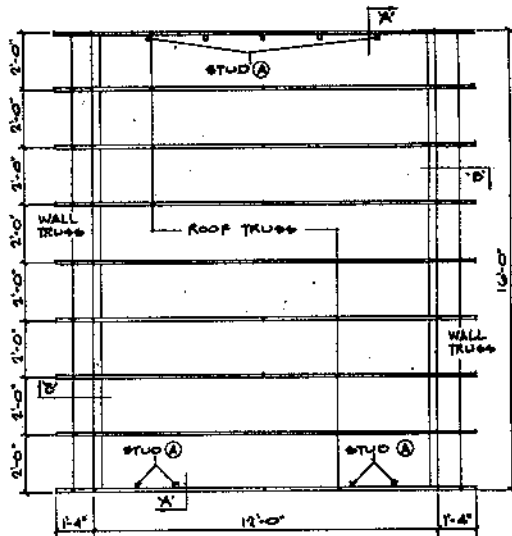
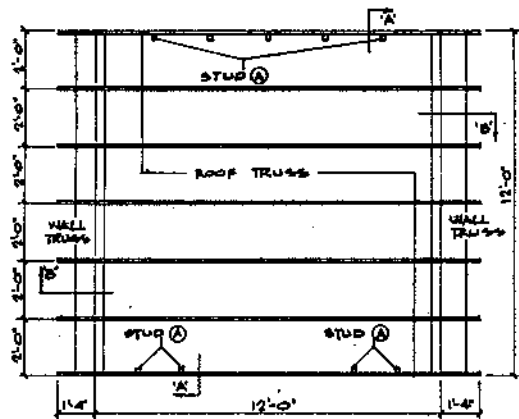


REAR FRAME

CUTTING
INSTRUCTIONS
FOR A

ILLUSTRATION

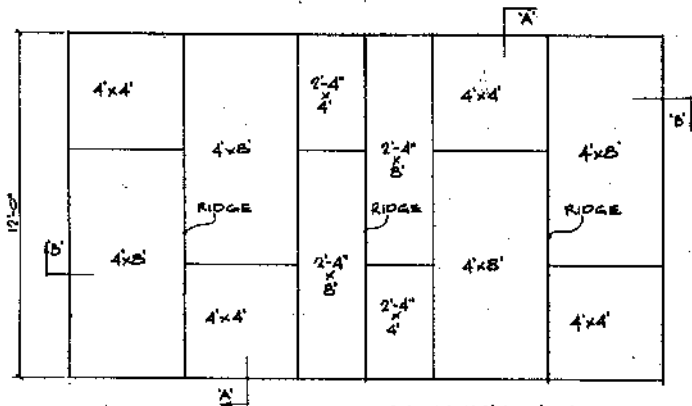
E



ROOF LAYOUT

ILLUSTRATION

F

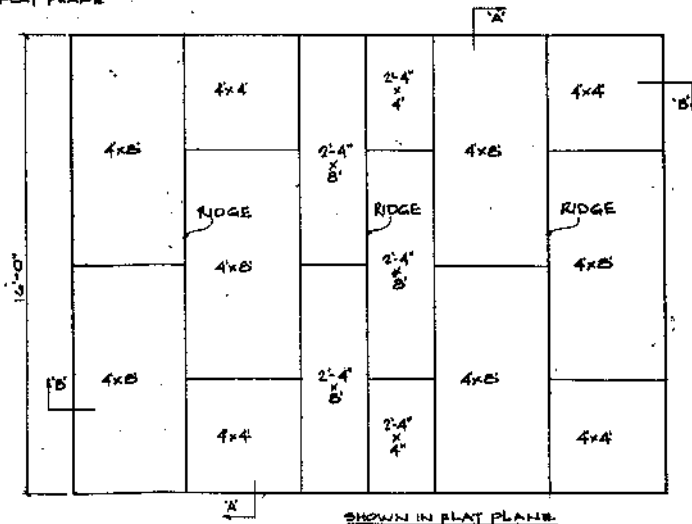


SHOWN IN FLAT PLANE

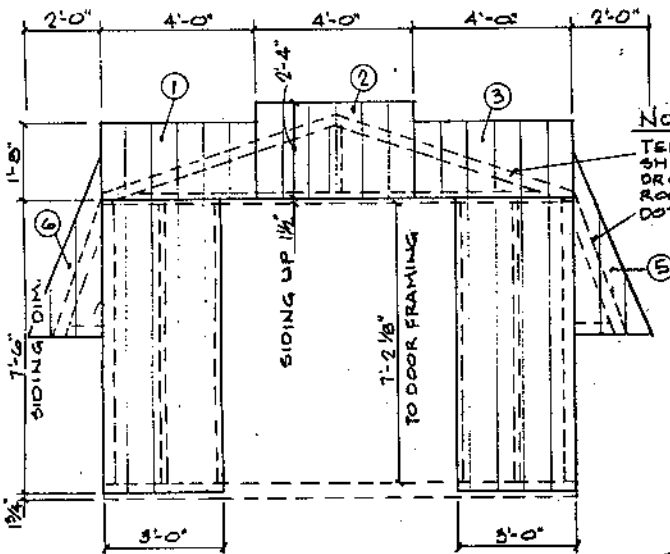
ROOF SHEATHING LAYOUT

ILLUSTRATION

G



SHOWN IN FLAT PLANE



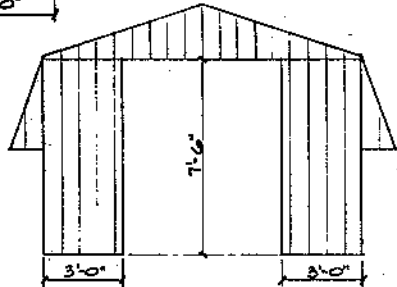
NOTE:

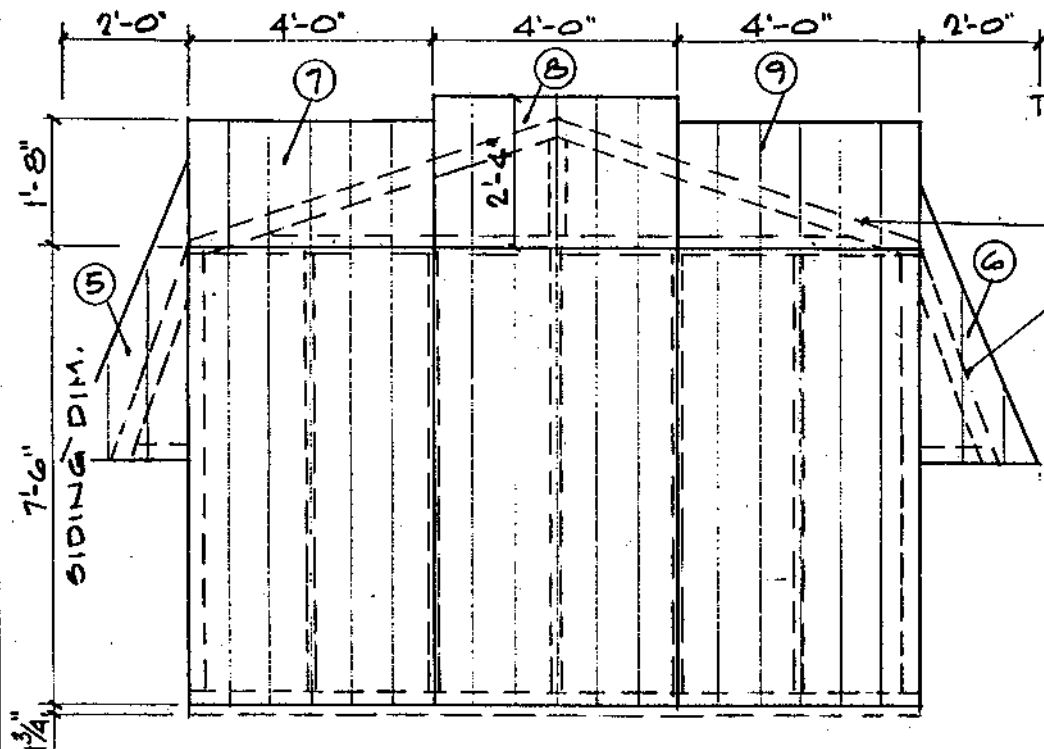
TEMPORARILY TACK NAIL SHEATHING TO FRAME. DRAW GUIDE LINES ALONG ROOF SHEATHING AT DOTTED LINES.

DOTTED LINES INDICATE BARN STRUCTURE.

FRONT SIDING LAYOUT

ILLUSTRATION H



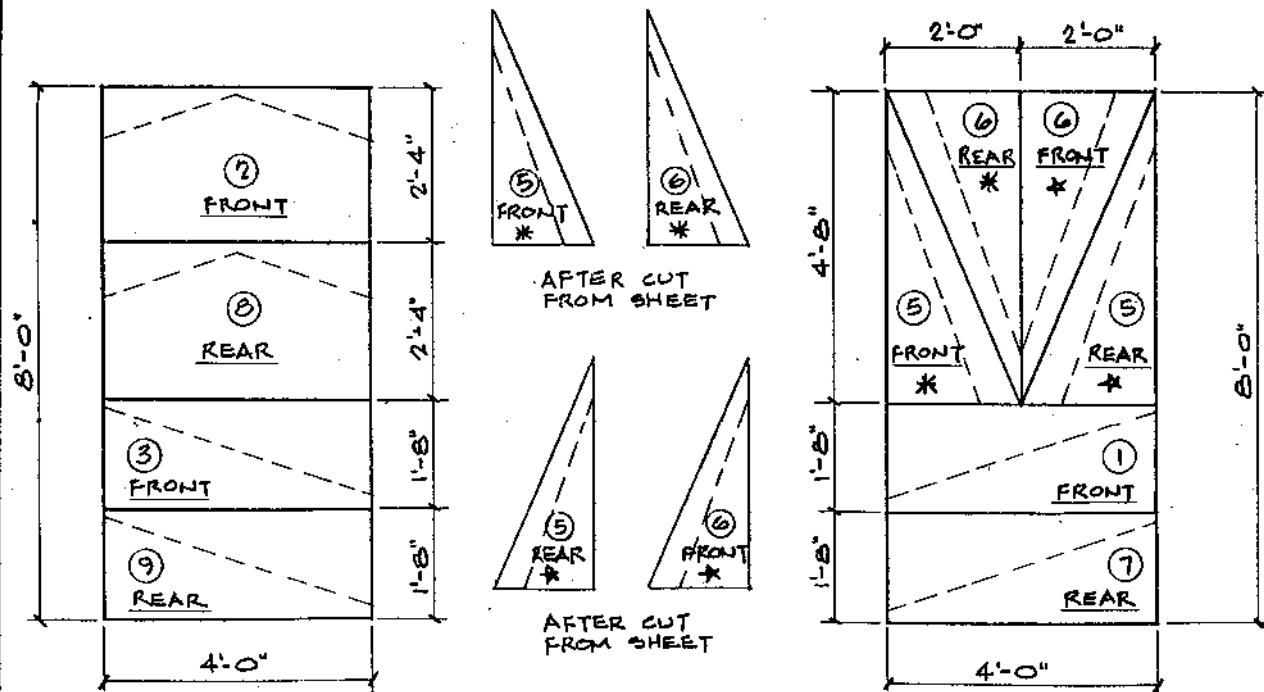


NOTE:
 TEMPORARILY
 TACK NAIL
 SHEATHING
 TO FRAME.
 DRAW
 GUIDELINES
 ALONG ROOF
 SHEATHING
 AT DOTTED
 LINES.

REAR SIDING
 LAYOUT

ILLUSTRATION 1

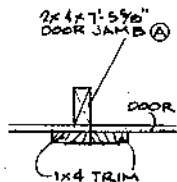
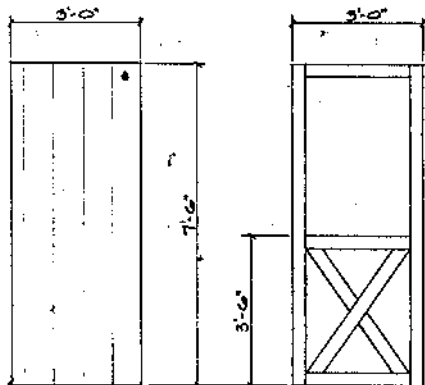
DOTTED LINES INDICATE
 BARN STRUCTURE.



CUT SIDING ON SOLID LINES AS DIMENSIONED AND TACK NAIL ON FRONT, ILLUSTRATION H OR REAR, ILLUSTRATION I BY NUMBER AND LOCATION. DOTTED LINES INDICATE APPROXIMATE FINAL CUT AFTER DRAWING GUIDE LINES ALONG ROOF SHEATHING.

ILLUSTRATION

J



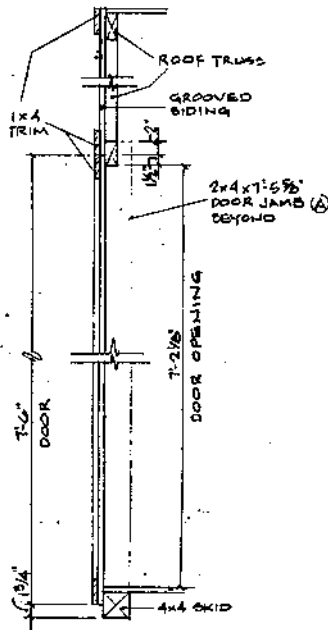
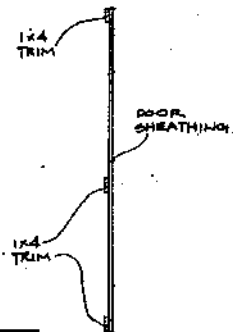
SECTION @
DOOR JAMB

DOOR SHEATHING
(2) REQ.

1x4 DOOR TRIM
(2) REQ.

NOTE:

1x4 TRIM TO BE
SCREWED TO DOOR
SHEATHING



SECTION THRU
DOOR

ILLUSTRATION

K